

# CERTIFICATE OF LOCATION OF GOVERNMENT CORNER

NORTH QUARTER Corner of Section 21, Township 106, Range 39, 5TH P.M.

STATE OF MINNESOTA, County of MURRAY

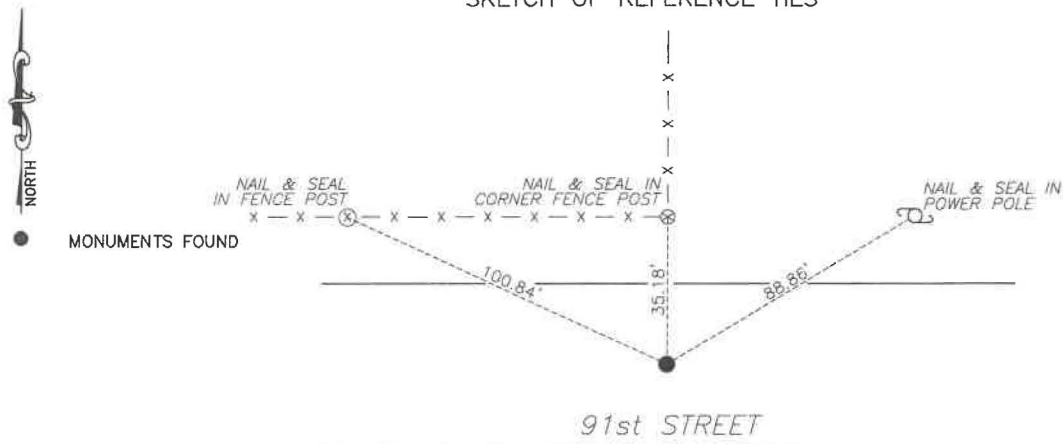
At the corner location shown on the sketch:

☒ On 8/12/2024 found a Concrete Monument, and placed 5/8" iron along the north side for locating purposes.

☒ left monument as found, ☐ lowered monument, ☐ removed monument (explain)

☐ On \_\_\_\_\_ placed a \_\_\_\_\_

SKETCH OF REFERENCE TIES



Murray County  
Coordinate System NAD83 (1996)

N: 147653.529  
E: 561567.806

WGS84

LAT: 43°58'42.7085"  
LON: -95°31'58.0695"

Statement of evidence relative to this corner location is on back of page.

I hereby certify that this document and the data contained herein was prepared by me or under my direct supervision.

Daniel L. Bueltel  
License No. 43844

3/13/2025  
DATE

MAR 13 2025

MURRAY COUNTY RECORDER

Statement of Evidence

NORTH QUARTER CORNER SECTION 21, T106N, R39W OF THE 5th P.M.

In September 1858 W.J. Neely surveyed the east township line.

In July of 1861 J.W. Myers surveyed the north, south, and west township lines.

In August of 1861 Wellman & Smoot subdivided the township.

County records from 1940 notes a concrete monument at the corner.

On August 12, 2024 BuelteI-Moseng Land Surveying found an 8" concrete monument with a chiseled "x" on top, 8" below surface.